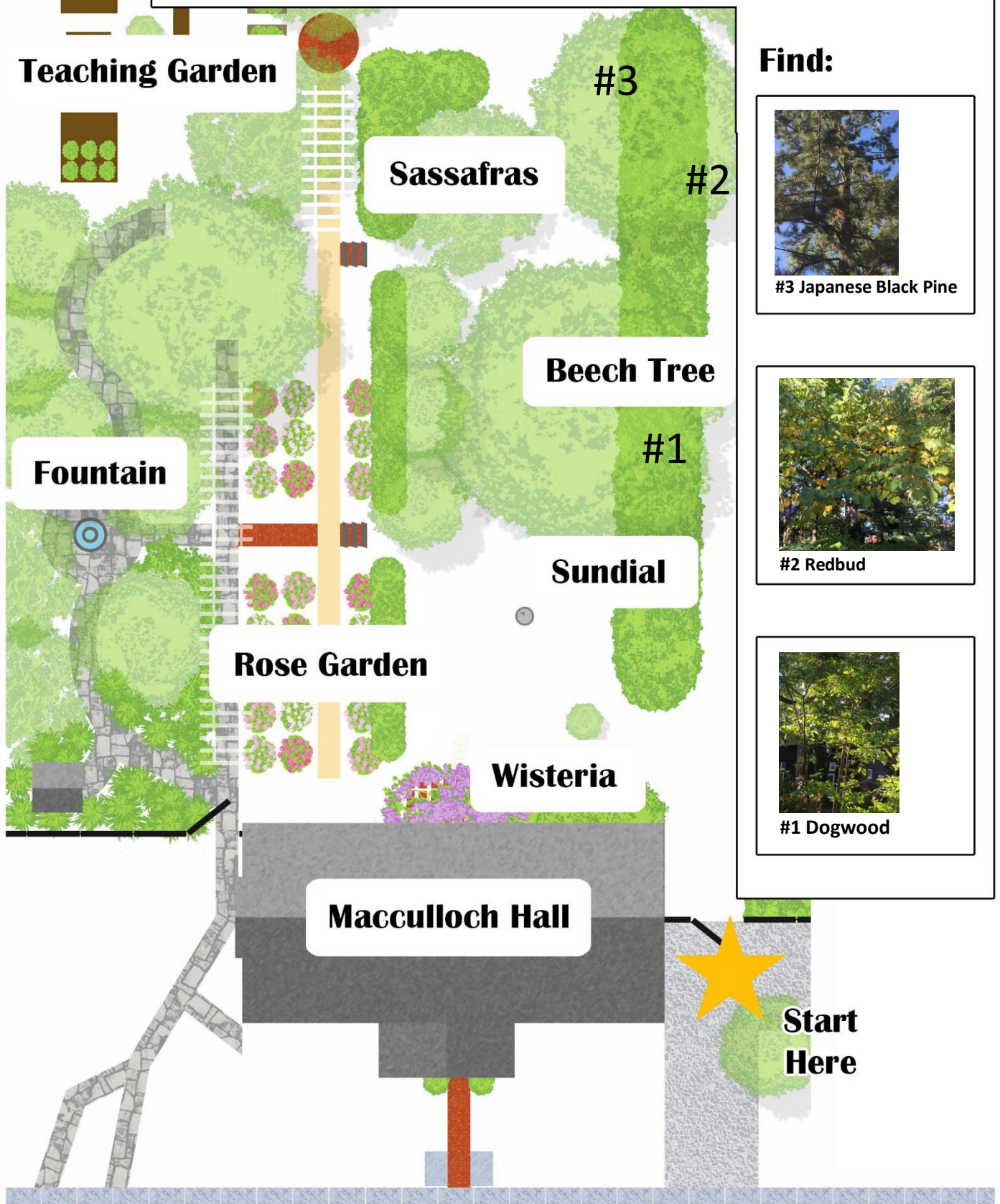


# Macculloch Hall Historical Museum

## Tree Trail #4



10

9

8

7

6

5

4

3

2

1

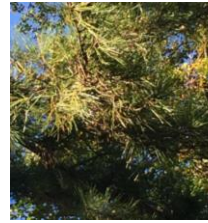
inches

## Find Out More

**Dogwood** (*Cornus*) There are 11 species of Dogwood trees native to the United States. They bloom from late March to May and white “flowers” called bracts are the most common. Dogwood bracts are petal-like leaves that attract pollinators.



**Japanese Black Pine** (*Pinus thunbergii*) The tree trunk usually grows into an irregular shape, not straight. The pine needles grow in clusters of two. This tree is also popular in south Jersey near the beaches because it doesn't mind the salty air.



**Redbud** (*Cercis canadensis*) is native to the northeast United States. It has pink flowers in April followed by the growth of its heart-shaped leaves. A redbud can grow to be about 20 years old.



**Sketch your favorite place or thing in the garden**

MHHM receives operating support from the W. Parsons Todd Foundation, the New Jersey Historical Commission, a division of the New Jersey Department of State and the F.M. Kirby Foundation and project support from The Astle-Alpaugh Family Foundation, the Garden Club of Morristown and The Rotary Club of Morristown.