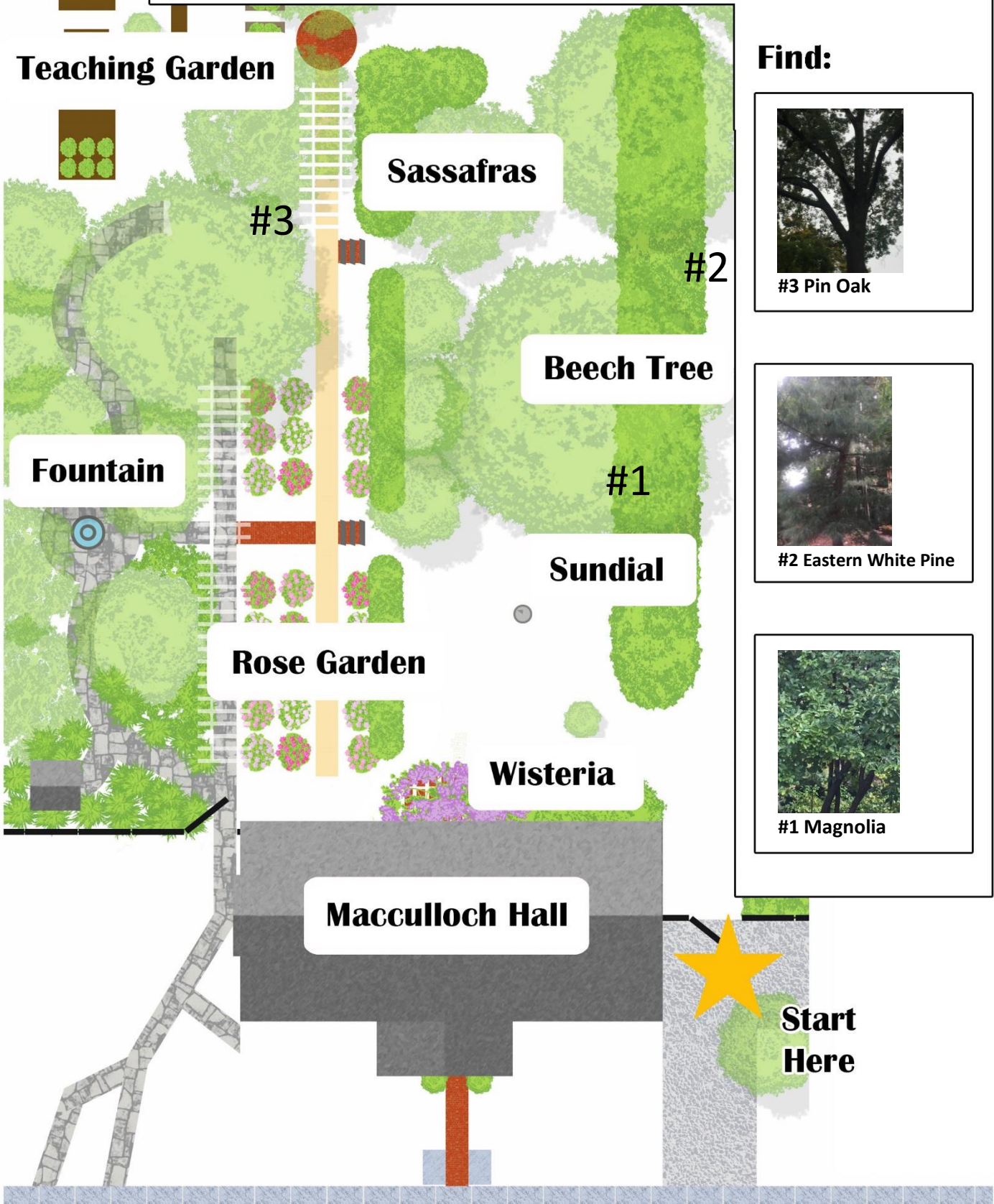
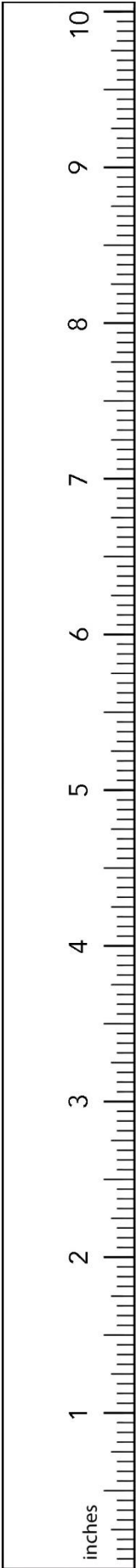


Macculloch Hall Historical Museum

Tree Trail #3





Find Out More

Eastern White Pine (*Pinus strobus*) is native to North America and can grow to 150 feet high with a tree trunk three feet wide. Its leaves are called needles and they are grouped in bunches of five. Mourning doves, nuthatches, and chickadees are just some of the birds that like to build nests in this tree.



Magnolia (*Magnoliaceae*) The large oval leaves of the magnolia tree feel leathery and are covered with a layer of wax. This tree usually blooms from April to June with white flowers. Beetles are the main pollinators of magnolia flowers.



Pin Oak (*Quercus palustris*) There are over 600 different types of oak tree. White oaks usually have rounded lobed leaves and red oaks usually have pointed lobed leaves. An oak tree will produce millions of acorns in its lifetime but only a few thousand will actually grow into trees; the rest provide food for animals and birds.



Sketch your favorite place or thing in the garden

MHHM receives operating support from the W. Parsons Todd Foundation, the New Jersey Historical Commission, a division of the New Jersey Department of State and the F.M. Kirby Foundation and project support from The Astle-Alpaugh Family Foundation, the Garden Club of Morristown and The Rotary Club of Morristown.